

265mm



CM550X Mobile Computer
Quick Start Guide

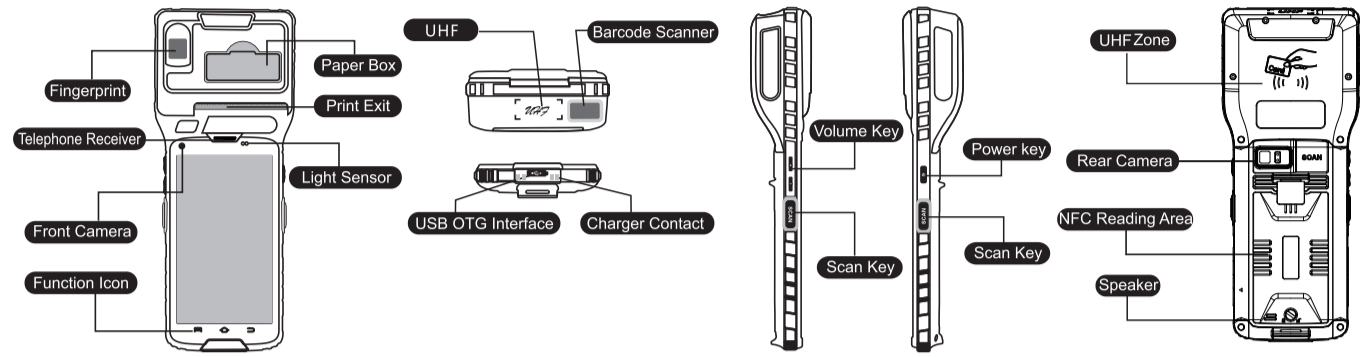
Accessories list:

- Mobile Computer
- Charger
- USB cable
- Quick start guide
- Qualification certificate
- 4000mAh battery
- Handstrap

CILICO Microelectronics Limited
@contact@cilico.com www.cilico.com

HQ add: 4th Floor, Building A, HuaxinBC, Zhongba 1st Road, Hi-tech Zone, Xi'an, China
ShenZhen add: 2nd Floor, Building A, Runfeng Industrial Park, Bao'an, Shenzhen, China

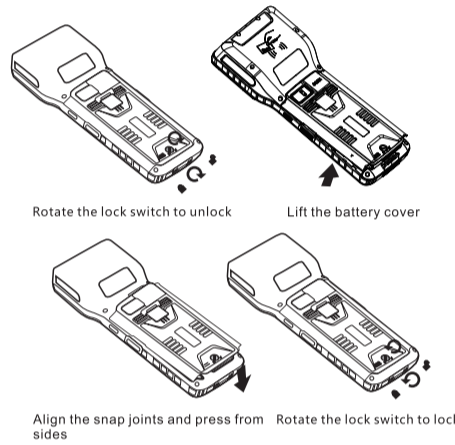
1 Overview for Mobile Computer



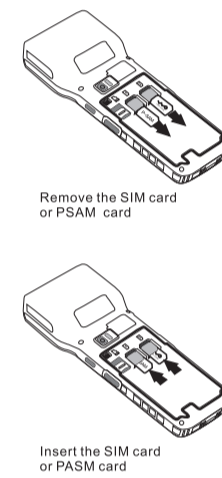
2 Indicator Description

- WLAN is ON
- Bluetooth is ON
- Bluetooth Headset is connected
- GPS is positioning
- Data Uploading
- Data Downloading
- Alarm is ON
- Battery Capacity
- Silent Mode
- Playing Music
- Music Paused

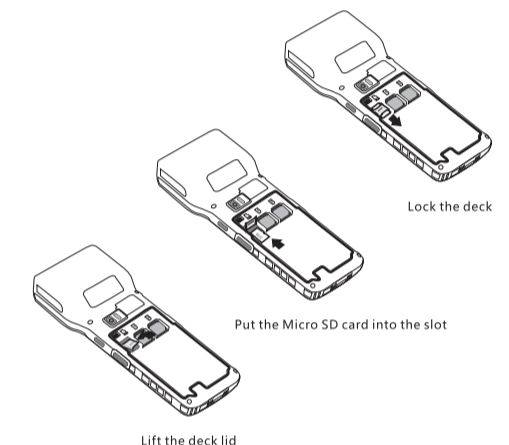
3 Open / Lock the back cover



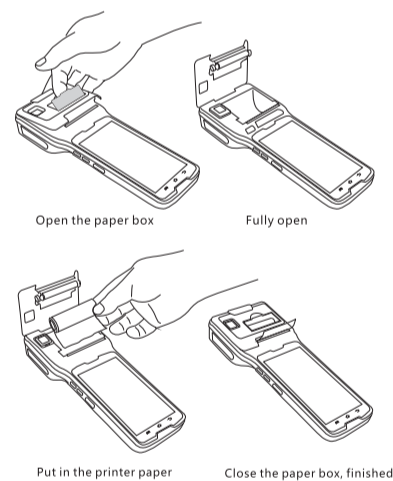
4 Install the SIM/P-SAM Card



5 Insert / Remove Micro SD Card

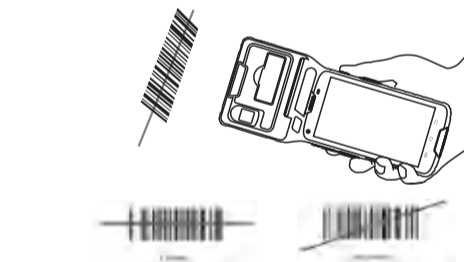


6 Install the Printer Paper

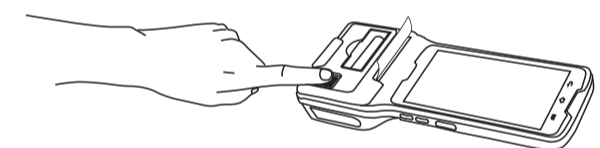


7 Barcode Scanning (optional function)

1D/2D barcode module can help you read barcode information easily. Following is the operation steps.
Enter "Menu" > "Settings" > Turn ON "Left Scan" or "Right Scan" ;
Enter "Messaging" > Select "New Message" > the cursor move to "Type Text Message" ;
1d scanning beam (or 2d scanning area) will be emitted from the scanning window, adjust it at the center of barcode;
You will hear a short sound after reading successfully, and the barcode will be displayed in the receiving text box.



8 Fingerprint Function



Warning

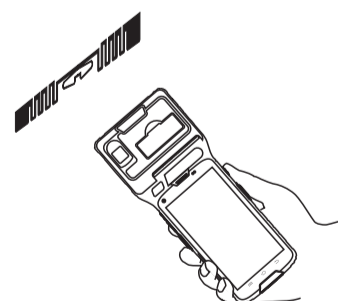
1. Please remove the power and USB cable under thunderstorm weather conditions, to avoid damage from thunder and lightning.
2. Keep away from heat sources, please ensure sufficient air circulation. Do not use the PDA and its battery exposed to high temperature or heating conditions, such as sunshine, heaters, microwave oven, oven or water heater, etc. Battery temperature is too high, which may cause explosion.
3. Pay attention that the PDA is waterproof during storage, transportation and running.
4. Do not use the failure or non standard power adapter and battery. Please use a matching power adapter offered by the authorized producer, otherwise which is in danger of damage to the PDA.
5. Please use the PDA within the temperature range of 0°C ~ 45°C. Store the PDA and its accessories within the scope of temperature - 20°C ~ 45°C. When the environment temperature is too high or too low, may cause the PDA failure.
6. Don't continue to recharge the battery for more than a week, and overcharge will shorten the battery lifetime. Fully charged battery ashore, and itself can discharge the battery. Long time no to use the PDA, which will cause the battery discharge.
7. When the charging is completed or not charging, please disconnect the charger connected to the PDA and unplug the charger from the power outlet.
8. Please deal with correctly batteries, and the battery can't be as city life garbage disposal.
9. Please don't put the battery into the fire, otherwise may cause explosion!

9 NFC

NFC reading area is marked on the back cover of battery, the reading distance is 0-7cm.

- > NFC function default on
- > when it is off, following is the operation steps. Enter "Menu" > "Settings" > "Wireless & networks" > "More..." Turn ON NFC
- > Default no NFC software in device, there will be a low tone to indicate when you read the card without software in device.

10 RFID Recognition(Optional)



DISCLAIMER

- > Our company does not undertake any responsibility for the loss of the natural disasters (such as: earthquakes, floods, etc.).
- > Our company does not assume any responsibility for any loss with the use of this product, (including the loss caused by the use according to the user manual), such as loss of profits, loss of reputation, loss of business interruption, loss of stored data or store data changes and the resulting special, incidental, consequential or indirect loss.
- > Our company does not assume any responsibility for any loss caused by improper use of non-specified hardware or software communications. Our company does not guarantee or provide technical support for the information, data, files, or other products and services obtained through the use of this product.
- > Our company does not guarantee or provide technical support for third-party software. The content of this manual is provided in accordance with the status quo. Our company will not make any kind, either express or implied guaranty for the accuracy, reliability, and content of this document.
- > Our company reserves the right to modify any information in this manual at any time without prior notice and any liability.

Warm Tips:

1. Pls ensure fully charge the battery(100%) for first time use.
2. Pls charge in time if power lower than 20%.

*The company reserves the right to interpret this quick start guide

394mm

材质:80G 双胶单色