



C6 Android Intelligent Handheld Terminal

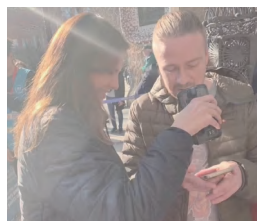


CILICO C6 is a powerful Android mobile terminal, with 5-inch HD display, octa-core CPU and 4G LTE & WIFI connection, which supports 1D/2D barcode scanning, NFC and built-in UHF RFID. It has been widely used in industries like retailing, logistics, warehousing, and asset management etc. in over 75 countries and regions.

Vertical application



Healthcare



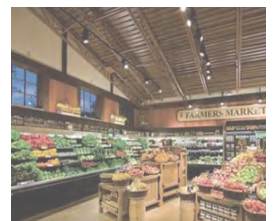
Ticketing Management



Patrol inspection



Manufacturing



Retailing

C6 Specifications

Basic Parameters

Size	147×78 ×19mm(L×W×H)
Weight	233g (including battery)
Display	5.0 inch IPS screen, Resolution: 1280*720
Touch panel	Capacitive
Backlight	LED Backlight
Battery	Li-polymer,4000mAh,3.7V Uptime:more than 8 hours Standby time:300 hours
Card slot	2 SIM card slots, 2 PASM card slots(optional) 1 Micro SD card slot(Maximum 128G)
Communication interface	Type-c, Support OTG
Network connections	4G/3G/2G, Wi-Fi, GPRS, Bluetooth
Notification	Warning Tone,Multi-color LED,Vibration
Keyboard	On-screen Keyboard+3 Virtual Keys:Back, Home, Menu
Audio-frequency	Microphone, Loudspeaker and Receive
Physical Keys	Power, left scan, right scan, volume+, volume -
Headset	Support 3.5mm headset jack
Power adaptor	Input:100-240V,50/60Hz 300mA Output:5V,2A

Performance Parameter

CPU	Octa-core 2.0GHz
OS	Android 11 with GMS
Memory	3GB RAM/32GB ROM 4GB RAM/64GB ROM

Working environment

Operating temperature	-10°C to 50°C
Humidity	5% to 95% (non-condensation)
Drop specification	Within operating temperature range, it can withstand several drops from 1.5mheight to the concrete ground
Roll specification	500 times of 1.6 feet / 0.5 m rolls; higher than IEC roll standard
Vibration	4g SPK Sine (5Hz to 2KHz); 0.04g2/Hz randomness (20Hz to 2KHz); 60 minutes per axle, 3 axles
Electrostatic protection	+/- 10kv air discharge +/-6kv contact discharge
Sealing Level	IP65

Wireless Communication

WWAN	GSM/GPRS/WCDMA/CDMA/TD-SCDMA/TDD-LTE/FDD-LTE
WIFI	WIFI frequency: 2.4GHz & 5GHz WIFI protocol:802.11a/b/g/n/ac
GPS	GPS\BDS\GLONASS
Bluetooth	Bluetooth 5.0

Data Collection

Scanning engine	Zebra/Honeywell scanning engine
Supported 1D barcode types	UPC/EAN,Bookland EAN,UCC Coupon Code,ISSN EAN, Code 128,GS1-128,ISBT 128, Code 39,Trioptic Code 39, Code 32, Code 93, Code 11, Interleaved 2 of 5,Discrete 2 of 5,Codabar,MSI,Chinese 2 of 5,Korean 3 of 5,Matrix 2 of 5,Inverse 1D,GS1 DataBar,Composite Codes. etc
Supported 2D barcode types	PDF417, MicroPDF417, Data Matrix, Data Matrix Inverse, Maxicode, QR Code,MicroQR,QR inverse,Aztec,Aztec Inverse, Postal Codes: US Postnet, US Planet,UK Postal, Australian Postal, Japan Postal, Netherlands KIX Code,USPS 4CB/One/Intelligent Mail,UPS FICS Pstal. etc
Camera	Front camera: 5 MP Rear camera: 13 MP,auto-focusing Rear camera flash; support flashlight

Internet of things function

NFC	Operating frequency: 13.56MHZ Support protocol: MifareClassic (MF1) NDEF, NfcV (15693) Ultralight (MF0), IsoDep(Quasi CPU MF3), IsoDep (CPU) Reading distance: 0-5cm (depending on the type of card)
RFID	Operating frequency: CN: 920-925MHz US: 902-928MHz EU: 865-868MHz JP:916-921MHz(w LBT) JP:916-923MHz Support protocol: ISO18000-6C/EPC C1G2 Reading distance:0.8m (depending on the label)
Security PSAM	Supporting ISO7816 standard, supporting 2 PSAM cards(optional)
Sensors	Light sensor, distance sensor, gravity acceleration sensor, geomagnetic transmission sensor, Hall sensor (optional)

Others

Certification	CE/CCC/UN38.3/RoHS/IP65
Accessories	Power Adapter/USB cable/ battery
Optional accessories	Charging cradle/Cradle Adapter/battery

Head office: 4th Floor, HuixinIBC Building A, Zhangba 1st Road,Hi-tech Zone, Xi'an,Shaanxi,China

+86 29-8860 5865

Shenzhen branch: 2nd Floor, Building A, Runfeng industrial park ,Gushu, Xixiang Street,Bao'an District, Shenzhen, China

+86 755-2912 0504

E-mail: contact@cilico.com



www.cilico.com